

CONNECTIONS



Spring 2008
Volume 3, Issue 1

Staying Connected



DIRECTOR/COFOUNDER
Andrea Baldwin



BOARD OF DIRECTORS

PRESIDENT
Andrea Baldwin

SECRETARY
Sandra Winstead

TREASURER
Jane Feinstein

ASSISTANT TREASURER
Dave Carter

MEMBERS AT LARGE
Lorrie Adeler
Amanda Arnold
June Barnett
Leslie Menninger
Charlene Vandawalker



Connections
11585 E. Purple Sage Road
Cornville, Arizona 86325
Phone: 928-639-0791
Fax: 928-639-0791 (call first)
E-mail:
connections@commspeed.net
We're on the web!
www.ConnectionsAZ.com

Newsletter produced by:
Leslie A. Menninger
All newsletter publishing
costs are donated!

QUARANTINED???

On April 11, one of our Connections horses, T.C., was acting sick and not wanting to eat his breakfast. Our instructor Jordan brought him up to the barn to check his vital signs and determine what was wrong. When she looked at his gums to see if they were normal color or pale, she discovered blisters and canker-sore-like lesions. Being concerned about T.C.'s droopy attitude and suspicious sores in the mouth, the vet was called in and blood samples were drawn.

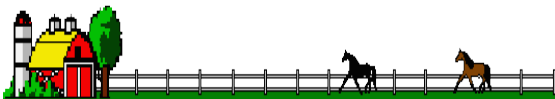


At that time, we were told it could be an equine disease called Vesicular Stomatitis (VS), which can be contagious to other horses and possibly humans. Immediately, we decided to voluntarily shut down all operations. We were not about to put our clients, volunteers or horses at risk, without knowing what was going on with the herd. State vets became involved and, over the following weeks, many tests were done on all of the horses. The good news is, we did not have VS.

This has been a lengthy and tense process; and we have been closed down from April 11 through the third week of May. Being unexpectedly shut down for this prolonged a time, with continuing expenses and no ability to create income, has caused a great deal of concern about the financial stability of this program.

We desperately need your help to get this program back up and running and to recoup our losses. This couldn't have come at a worse time, as we are watching feed costs skyrocket weekly.

(Continued on page 3)



Message from the Director - Andrea Baldwin



"Goodbye, Dear Friend. We'll miss you."

2007 was a year filled with agony and ecstasy. Through the loss of our beloved partner Jessie, our volunteers, staff and riders formed a closer bond, experiencing the grief process together. Funerals were held daily for each group of riders with their volunteers. No matter what our station in life, we are all at one time or another going to experience loss. I personally experienced how healing it is when loss is shared. Balancing this loss has come in the ability to focus on the positive. We have been blessed with the addition of riders from Rainbow Acres. This is a wonderful residential facility for adults with disabilities in Camp Verde, Arizona. Their enthusiasm and the dedicated staff from Rainbow Acres, which comes with them weekly and even volunteers, have been so uplifting for all of us who are fortunate enough to be hands on in this program. New clients/riders always feel like a gift to staff and volunteers.

We are very proud of a new substance abuse program facilitated by Andrea Baldwin and Dr. Geri Whaley. These clients come to the Connections program from Rio de Esperanza at the Mingus Center in Cottonwood, Arizona. We have provided equine-assisted psychotherapy (EAP) services to over 44 clients struggling with addictions. We are hoping this year to expand our EAP program.



The 1st Annual Italian Night

Connections hosted an Intro to Equine-assisted Psychotherapy Open House on April 5, 2008, with 30 attendees. Andrea Baldwin and Dr. Geri Whaley were the facilitators of this event. Feedback from attendees was very positive, and we hope to have a more of these events.

2007 Highlights were:

Taking clients to an open horse show, where everyone from Connections won ribbons in classes with able-bodied riders.



A Rainbow Acres Rancher having some Valentine fun!

A motorcycle bike run fundraising event, which was held in October in Sedona, Arizona, and great fun for all who attended. Thank you, Wild Wind Tours and Andrea Bordelon. For those of you who don't know her, Andrea is a young woman who is a successful businesswoman *and* has a passion for this program and horse power, whether it's 4-legged or has wheels.

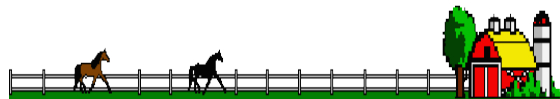
How can we think of last year's highlights and not think of the amazing Italian Night— excellent food, all home cooked, our great auctioneer Dewayne Turner who entertained everyone, and all those who donated goods or services for the auction and raffle, did food prep work, sold tickets, decorated, etc., etc. This is the only fundraiser I've ever heard of where the attendees are now asking, 'When are you going to put on the next one?'".....which, by the way, will be this November!

With some of our down time, we are enjoying moving into a new workshop built by Hoppy Menninger, which has been dubbed the "Hoppy Shack," although it's definitely not a shack. It allows us storage for tools, equipment, fundraising supplies, and a wonderful place in which to work on maintenance projects. Once again, we are so grateful to have the Menningers (Hoppy's wife, Leslie, is a board member and also has the thankless job of producing this newsletter) on the Connections' team.



The "Hoppy Shack" near its completion

As the director of Connections, I would like to thank all of you guardian angels who have heard our pleas on behalf of those we serve. Thank you for responding in the past, and I am hoping that once again you can find a way to help Connections during the most challenging situation that this program has had to face so far. The next few months' survival of this program will be totally dependent on the generosity of individuals like you. Almost ten years ago, this program did not exist but the need did—as has been demonstrated by its continued growth. Believe me, those of us locally are circling our wagons and looking for individuals who are willing to host emergency fundraisers as soon as possible. But we will still need your help to make up the difference. It seems all we hear about is what is going wrong. This is going right; it is making a difference. **Thank you for your support!**



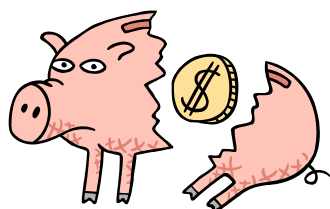
Quarantined!

(Continued from page 1)

Our 2007 expense breakdown is as follows:

Administrative	10%	Horse Care	21%
Facility Maintenance	10%	Insurance	5%
Office	4%	Program Services	40%
Rent	7%		

As you can see, we are very good stewards of your donations. This has been one of those things in life you just can't plan for. Our horses are recovering from their mystery illness and will be ready to work soon. They are missing their clients and volunteers.



“...we decided to voluntarily shut down all operations. We were not about to put our clients, volunteers or horses at risk, without knowing what was going on with the herd.”

“...continuing expenses and no ability to create income, has caused a great deal of concern about the financial stability of this program.”

Message from the Treasurer - Jane Feinstein

Connections' expenses for 2007 totaled \$105,610; approximately \$8,800 per month. Contributions of \$53,509 & \$6,893 in scholarship funds, paid for an impressive 57% of those expenses! Program fee income amounted to \$29,860 — 28% of our expenses. We also held two fundraising events in 2007 which raised \$9,619 for the program.

We are so grateful to all of you for your continuing, and so important, support. Please remember our scholarship funds, donations for birthdays, memorials, etc.— We will send a card to the honoree or family, notifying them of your thoughtful contribution to Connections.

Thank you all again for all you do; your contributions keep this wonderful program going!



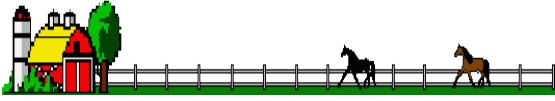
The Other Board Members Speak Out

Every week, Jane spends many hours performing her duties as Treasurer. She sits quietly hunched over her computer; taking care of the billing, entering income, paying bills & crunching numbers. Money comes in and money goes out...and there are certainly times (like now) when the money is going out faster than it is coming in! Jane presents the Board of Directors with various financial reports during our monthly meetings. When things are looking good, Jane grins from ear to ear. When things are not so good, like now...with a loss of revenue for nearly 2 months... Jane does not grin. She is *very* unhappy. And as we like to say, “When Jane’s not happy, NOBODY is happy.” So won’t you *please* help us keep Jane happy...and grinning from ear to ear...for the rest of the year?!?!?



“ Money comes in and money goes out...and there are certainly times (like now) when the money is going out faster than it is coming in! “





Special Thanks

A special thanks to **Lisa Ross-Williams & Kenny Williams** for dietary consultation and donation of numerous supplements for Asia. Lisa and Kenny teach horse owners how to support their horses naturally, in Mind, Body and Spirit. Catch Lisa's *If Your Horse Could Talk* Internet webcast at www.naturalhorsetalk.com.

We would also like to thank **Earth Song Ranch** for donating their wonderful Pro-Zyme supplement for Asia. Pro-Zyme is a mixture of horse friendly pre-biotics, probiotics and digestive enzymes that promote digestive health and optimize absorption of supplements. Check out earthsongranch.com.

Our heartfelt thanks go to Gerry Kleinfelt for establishing **The Kleinfelt Memorial Scholarship Fund**, in honor and the memory of his beloved wife, June, whom he lost in January of this year. They were married 58 years! The fund has been established to provide assistance to those who are in need of financial aid towards riding at Connections Equine Therapy Program. June Kleinfelt epitomized what we long for in this world today. She was a neighbor who maintained the highest level of dedication and community service. She was a role model, mentor and most important, a loving wife. She was a woman of the highest intellectuality and integrity. Her memory will live on through the smiles of the riders at Connections.

Thank you to Barb Remmer and Arizona Desert Riders for their donation in memory of Howard Remmer, a fine horseman who knew the best way to see this beautiful country we live in is from the back of a horse. His love of horses will be shared with our riders through this thoughtful donation.

Connections on the Web

Don't forget to check our web site on a regular basis. We continually update it with photos and post notices for upcoming events and fundraisers. Feel free to send us your comments, using the Feedback Form page.

We're at www.ConnectionsAZ.com

Wish List

Items for which we have a seasonal need:

- Endure Fly Spray
- Half Barrel Planters & Plants
- Gift Cards for Home Depot & Office Max

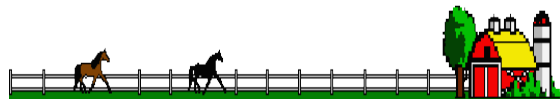


Becoming a Volunteer

We could not operate without the dedicated help of our faithful volunteers. Please consider helping by BECOMING A VOLUNTEER. Volunteers are the lifeblood of the program. There are many areas in which volunteers can find a way to share their talents or learn new ones. Areas of opportunity are:

- Feeders • Leaders • Side Walkers • Horse Care • Barn Care • Special Maintenance, Work Crew, Garden Work, etc. •
- Gatekeepers • Riding Team • Volunteer Coordinator • and MUCH MORE •

WARNING: Volunteer Service at Connections may become addictively enjoyable. You could find yourself spending more time with us than you anticipated.



Riding Scholarships

Very few of our riders – about 25% -- can participate without financial assistance through a full or partial scholarship. Whether it is clients with physical and cognitive challenges, or clients with emotional and behavioral challenges, their ability to contribute to the cost of their sessions creates only 27% of our needed income. Contributions generate the majority of the funds necessary to keep our program going.

The riders need your help!

You can help by making a one-time donation or by establishing a Named Scholarship Fund in your name, your family's name, or in memory of a loved one. How often at holidays, or on special occasions, do our loved ones want to show their love or appreciation by doing something special for us? How many of us really need more stuff? Our Named Scholarship Fund is a wonderful way to make those occasions really special by helping our Connections riders continue to ride.

To start a Named Scholarship Fund, all you have to do is pick a name, such as The Smith Family Fund or The John Doe Memorial Scholarship Fund, fill out the form below, and make your donation.

We currently have 9 Scholarship funds: Howard Remmers Memorial Fund; June Kleinfelt; Miss Jessie's; Hoppy Menninger; Cerutti-Feinstein; Beulah's ; Huhn Kids; Michelle Plessinger; Damon's.

Named Scholarship Funds may be established at different levels. In appreciation for your donation, we would like to give you some special gifts—all of which have been donated to Connections.

\$200 Silver Level

- Connections DVD — to enjoy and/or help encourage others to donate to your fund

\$500 Gold Level

- Connections DVD & Connections Note Cards

\$1000 Platinum Level

- Connections DVD, Connections Note Cards & Connections Tote Bag

\$5000 & Above Diamond Level

- Connections DVD, Connections Note Cards, Connections Tote Bag & Recognition Plaque



Help keep our clients riding and smiling!



“Contributions generate the majority of the funds necessary to keep our program going.”

“Our Named Scholarship Fund is a wonderful way to make those occasions really special by helping our Connections riders continue to ride.”



Named Scholarship Fund

Name (Please Print)

Address

City, State, Zip

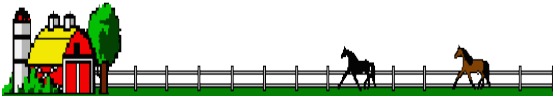
Phone

Signature

Name of Fund

- Silver \$200.00 Gold \$500.00
- Platinum \$1,000.00 Diamond \$5,000
- Other _____
- Check Enclosed Check Number _____

Mail to: Connections Equine Therapy Program
11585 E. Purple Sage Rd.
Cornville, AZ 86325



DONATION FORM

I would like to donate: \$5.00 \$10.00 \$20.00 \$30.00 Other \$ _____

I would like to adopt _____ for: 6 months @ \$600.00 12 months @\$1,200.00

(choose from: Asia, Nickie, Sam, Sunny, Tinker, or T.C.)

Yes! I'd like to become a monthly **CONNECTIONS** supporter for _____/per month

Please Print:

Name: _____

Address: _____

City: _____ State: _____ Zip: _____

Phone: _____ E-mail: _____

I would like to volunteer; please contact me

Donations to Connections Equine Therapy Program are tax-deductible to the extent allowed by law.

11585 E. Purple Sage Road, Cornville, AZ 86325

Phone: (928) 639-0791

connections@commspeed.net

www.ConnectionsAZ.com

(Please clip and mail with your contribution to 'CONNECTIONS' at the address above)

THANK YOU!

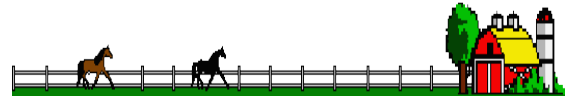
To the following businesses & individuals for your much needed support :

- | | | | | |
|----------------------------------|--------------------------------|---------------------------------------|---------------------------|-------------------------------|
| Al & Caroline Abbott | James & Melissa Cannata | Barbara & Franklin Hynes | Dimity & Vincent Raniello | Sunterra Centralized Services |
| Scott & Lisa Adeler | Steven & Jane Cannata | Liz Huhn | Barb Remmer | Brian & Cheryl Sutton Family |
| Arizona Desert Riders | Sandra Cartwright | Mary F. Jackson | Betty Richardson | Rochelle & Kenneth Tocker |
| James Arnold | Anne C. Cerutti | Gerry Kleinfelt | Rio Verde Roverettes | Edson & Jane Ulery |
| James & Nicole Arnold | Francesca Cerutti-Harris | Rex Lawman | John & Mary Beth Roberts | Nicki & W.D. Van Den Bosch |
| Sally Austin | Bob & Ellie Cocozella | Glenda F. Lewis | Judy Roubal | Debra Viotti |
| Andrea Baldwin | Margarito & Margaret Contreras | Rose Marie Licher | Adele Seronde | Margaret Walden |
| Bashas' Thanks A Million Program | Bebe Curry | Susan Link | Tracy Sheppard | Stan & Vicki Weston |
| Aline Benest | Cindy Draxler | Mary Lopiccolo | Karen Silverman | Peter & Adele Williams |
| Steve & Corinne Bennington | Clarkdale-Jerome Lions Club | John & Linda Lundgren | Andrea Snyder | Juanita Woods |
| Sam & Sally Braun | Escrip.com | Timothy MacKlin | Kathy Spangler | Donald & Jean Worfolk |
| Pat Breyfogle | Marlene Fentor | John & Cindy McCain Family Foundation | Dan & Mardee Sprayberry | Maxine Yates |
| Jayson & Shannon Brown | Nadine Ferdenzi | Caprice Mallet | Edith Stenger | Prudie Zale |
| Caballos Del Sol | GoodSearch.com | Bob & Sandra Malloy | Loree Hayes Drew Stewart | |
| Juniper Campbell | Toma & M J Gosselin | Jean Menninger | Ann Stone | All CETP Board Members |
| Adelaide & Jim Cannata | Vi Graeber | Agnes Peterson | Tony Stowers | |

It's always risky to thank individual donors for their support because there's the chance that we've missed someone.

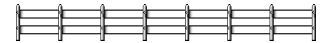
Here's hoping that we haven't missed **you!** If we have overlooked naming you for your contribution,

we sincerely apologize and thank you for your generosity.



Help Raise Funds by Shopping

Want to help raise funds for Connections all year long? Well here are three ways you can help every time you: search or shop on the Internet; use your credit or debit cards; use your grocery store loyalty cards.



“Raise money for Connections Equine Therapy Program just by searching the Internet or shopping online with www.GoodSearch.com.”

Raise money for Connections Equine Therapy Program just by searching the Internet or shopping online with GoodSearch - www.goodsearch.com - powered by Yahoo!

Just go to <http://www.goodsearch.com> and be sure to enter **Connections Equine Therapy Program** as the charity you want to support. And, be sure to spread the word!



Just go online to www.escrip.com and click on Members/Supporters and Sign Up. **Connections' Group Number is 500004295.**

Here's How it Works

- Register any one or all of your existing grocery club cards, and/or debit & credit cards for use in the program. Visa, Master Card, Discover, Safeway, & many online merchants participate in eScrip.
- Participating merchants will make contributions to your chosen groups, based on purchases made by you, just by using the cards you have registered.
- Your purchases are tracked and available to you online, allowing you to see just how much you are earning on Connections' behalf.



“Participating merchants will make contributions to your chosen groups, based on purchases made by you, just by using the cards you have registered.”

“...see just how much you are earning on Connections' behalf.”



For Arizona residents, Bashas' will donate 1 percent of the total sales linked to Connections, up to a \$2,500 donation. Their program runs from September 1st through March 31st, therefore you must activate our group ID number on or after Sept. 1 each year. Please ask a Bashas' cashier to link Connections' **Group ID #29197** to your Bashas' Thank You Card. You only have to link our number once, and the link will remain active until March 31.

It takes many hearts, hands and hooves to keep this program growing!

CONNECTIONS
11585 E. Purple Sage Rd.
Cornville, AZ 86325
www.ConnectionsAZ.com



Herd Happenings



Hi! It's me, Asia.

HELP!!! We're going stir crazy around here. We've been ailing & unable to work for almost 2 months...and can't even collect unemployment or disability! We hate being separated from our riders and volunteers. They need us, and we need them. Everyone around here has been down in the mouth (pun intended) since our voluntary shutdown.

I am greatly concerned about this thing called "loss of revenue." It seems to be making Andrea very sad, and that upsets me. Everyone has worked very hard to keep this program going and the herd working every week. We want to see our program continue. I was treated for an ulcer last year, and I don't need to deal with *that* again. So won't you please help us?

On a positive note, I've heard rumors that some nice mares may come and join our herd. If that's true, I can't wait to introduce them to our riders and show them the ropes.

Featured Connections Horse

Hi there! I'm Nickie. I'm an Aquarius. I'm a 12-year-old, bay-and-white, paint gelding. I am the largest and most handsome, in my opinion, of all the other males in the herd. I love working with clients. Everyone says I put my whole heart into everything that I do, which is interesting since I was born on Valentine's Day with a "heart" on my back. I have been donating my services to Connections since I was five years old. I have some minor special needs regarding my feet requiring special shoes. My temperament is very stable and trustworthy. My only shortcoming is that I have anxiety around food. I always worry about where my next meal is coming from. Can't understand that - I've never known a hungry day in my life! Oh, well, I guess we all have our stuff. If you will sponsor me, I will be able to continue the work I love and take so seriously, and I promise I will make you proud of me.

